

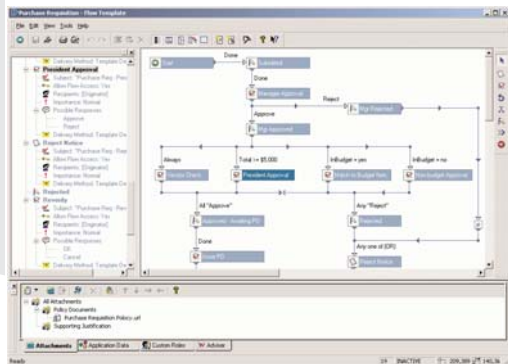
Keyflow

Highlights

- ▶ Automates paper-based workflows, dramatically increasing the speed and accuracy of processing while reducing errors and costs
- ▶ Helps enforce business policies
- ▶ Makes intelligent routing decisions and manages exceptions
- ▶ Reduces or eliminates bottlenecks presented by staff absences and turnover
- ▶ Tracks the progress of each process or transaction while providing full audit capability
- ▶ Provides rapid implementation of complex business processes using a flexible workflow design tool and its XML capabilities

Streamline and Automate Workflow Across Your Organization

How efficiently does your enterprise operate? Do transactions, tasks, and decisions flow seamlessly from one department to the next, regardless of the number of locations, steps, and participants involved? Or do transactions move at the pace of the people who execute them, sometimes happening quickly, and sometimes going astray when files are misplaced, people are absent, or paperwork is sent from one office to the next?



With Keyflow, you can create automated workflows that are tailored to your particular business needs and infrastructure.

In today's business environment, there are more competitive, regulatory, and economic pressures than ever before. Working efficiently isn't a goal—it's a mandate for survival. You need every advantage to stay ahead. You need eiStream Keyfile™.

eiStream Keyfile™ provides software applications that allow organizations of all sizes to safely and securely conduct business in a paperless environment using LANs, WANs, the Internet, and wireless communications. Our Keyflow software can help you streamline and automate mission-critical workflows, enabling you to dramatically improve the efficiency of your business processes.

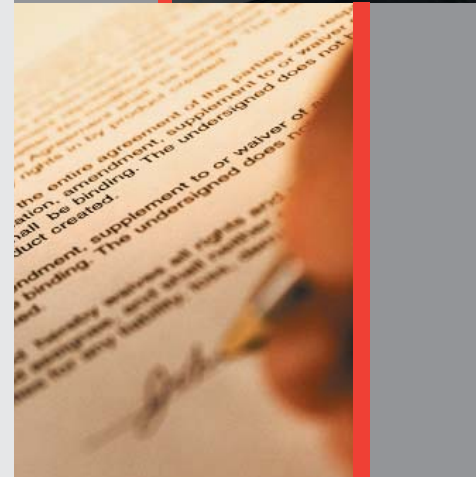
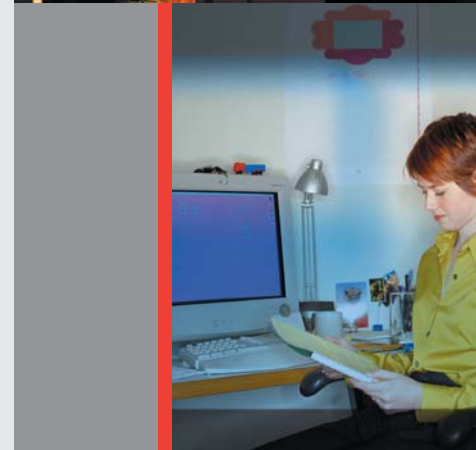
Design Workflows that Fit Your Organization's Needs

Keyflow transforms traditional business processes into efficient, integrated electronic procedures handled over LANs, WANs, or the Internet. With Keyflow, you can create automated workflows that are tailored to your particular business processes, infrastructure, and policy requirements. Every individual involved in a process, from purchasing to manufacturing, shipping, and accounting, can be included in the workflow.

Keyflow is quick to deploy, with an easy-to-use workflow designer that speeds the process of creating and implementing forms and workflows. Built-in forms capability—Keyflow ProForms—allows you to replicate current paper-based forms in an electronic format. You define each step within a workflow and specify the participants. You can even create work processes that run in parallel, a key feature for highly complex workflows.

Manage Complex Processes Automatically

When a workflow is launched, Keyflow manages the tasks that constitute it by evaluating requests, ensuring that preceding steps are complete, and initiating the next action without human intervention. Data fields on forms can be populated automatically using information in the workflow, and data placed in a form can be mapped automatically to application data in a flow.



Keyflow

By managing complex processes automatically, Keyflow frees your personnel from the time-consuming tasks associated with shuffling and tracking forms and papers inside and outside of your organization. Keyflow even allows you to define alternate paths for a process to follow when key approvers are unavailable, so you maintain efficiency levels.

Get the Functionality You Need to Work Efficiently

Keyflow includes a broad range of functionality to help you work more efficiently, including:

Multiclient Support - Allows you to participate in workflows using our tightly integrated Microsoft Outlook® client or your Web browser, via our browser-based WebWorkflow client.

Forms Integration - Integrates Keyflow ProForms, or your custom .NET, or .ASP Web-based forms with workflows to reduce processing time, costs, and errors.

Server Side Scripting - Provides custom processing with easy access to workflow data, databases, and third party OLE automation objects.

Enhanced XML Capabilities - Provides improved customization features and integration flexibility.

Flow Intervention - Displays the status of running workflows and allows 'on-the-fly' changes.

Support for Attachments - Attaches documents to workflows for review, annotation, revision, and approval. Works with eiStream Keyfile™, other document management systems, and the Windows® file system.

Alerts - Allows you to specify when recipients must respond to a task, alerts recipients when a response is overdue, and forwards tasks automatically to a substitute participant.

Logging Capability - Tracks the status of active work processes and enables the measurement of individual and/or group productivity as well as the ROI of particular processes. Supports Microsoft Access®, Microsoft SQL Server®, and Oracle™.

Product Components

Keyflow includes the following:

Workflow Server Manages workflow requests and includes a powerful inference engine for step processing.

WebWorkflow Server Provides access to workflow tasks via standard browsers without time-consuming client installations.

Workflow Designer Provides an intuitive graphical user interface for creating workflows.

Keyflow ProForms Allows enterprises to rapidly develop, deploy, and manage interactive XML Web forms.

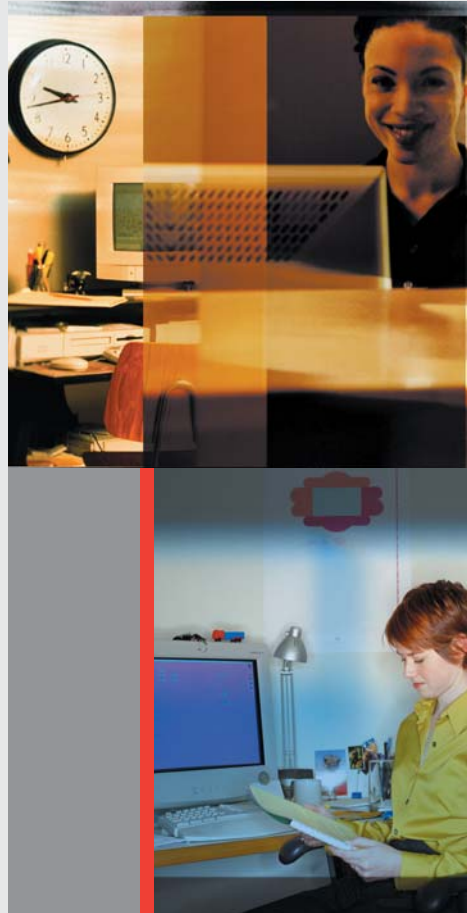
About eiStream

With headquarters in Dallas, Texas, eiStream serves more than 4,000 customer sites in 134 countries. Its comprehensive product and services portfolio addresses all aspects of information management, process management, and enterprise workflow. eiStream companies today include eiStream WMS, eiStream Enterprise Solutions, eiStream ViewStar, eiStream Keyfile and numerous international subsidiaries. For more information about eiStream, visit the Web site at www.eiStream.com

eiStream™

Streamlining Business Processes™

www.eiStream.com



eiStream, Inc.
Corporate Headquarters
2911 Turtle Creek Blvd.
Suite 1100
Dallas, Texas 75219
Phone: (214) 520-1660
Fax: (214) 219-0476

eiStream Keyfile
One Tara Blvd.
Suite 200
Nashua, NH 03062
Phone: (603) 459-0918
Fax: (603) 888-6471